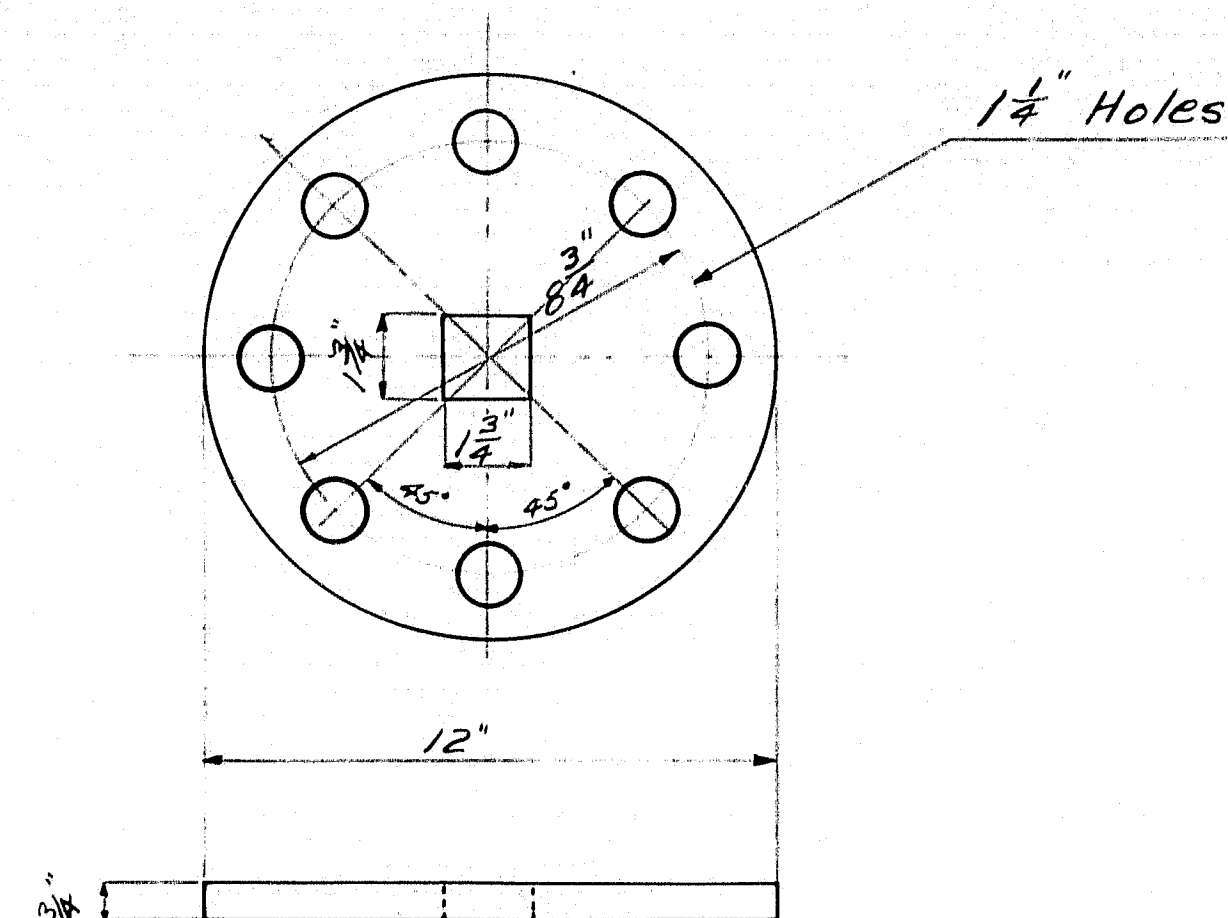
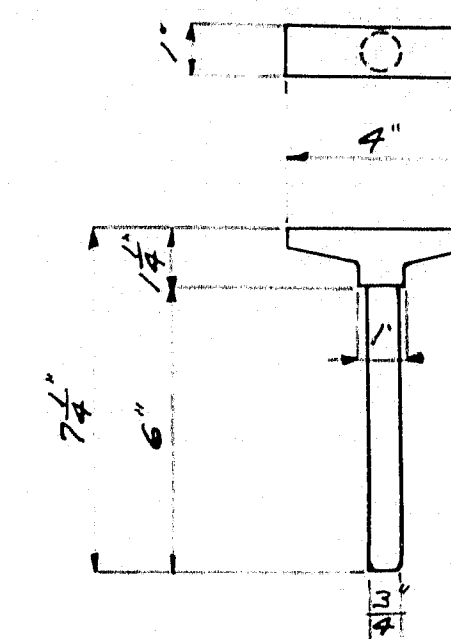


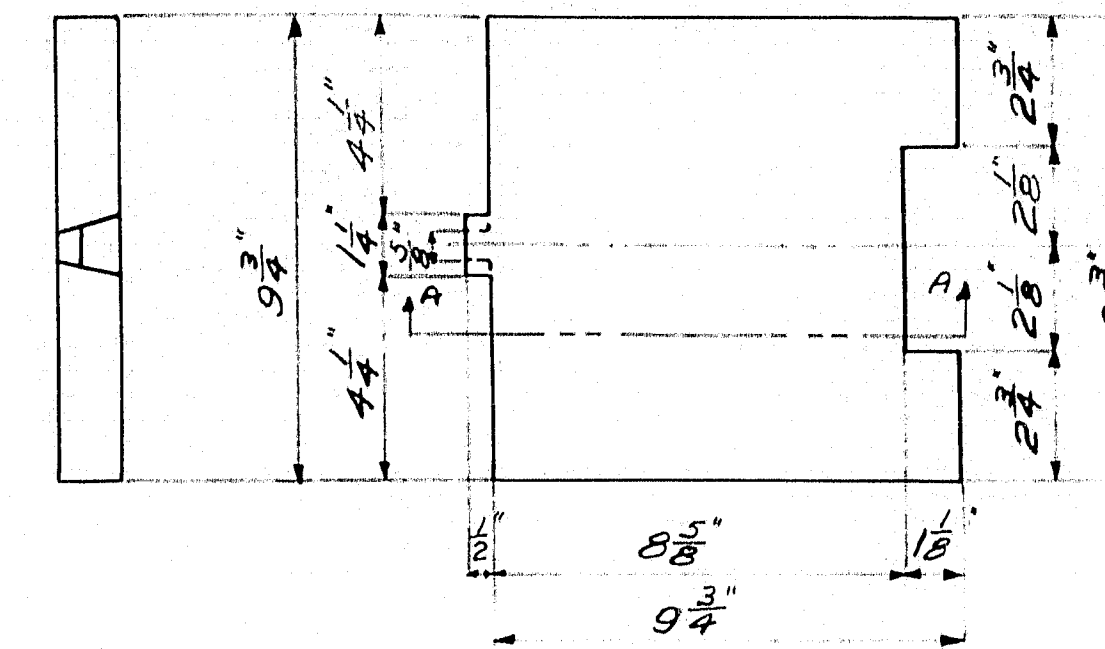
ASSEMBLY OF LOCK



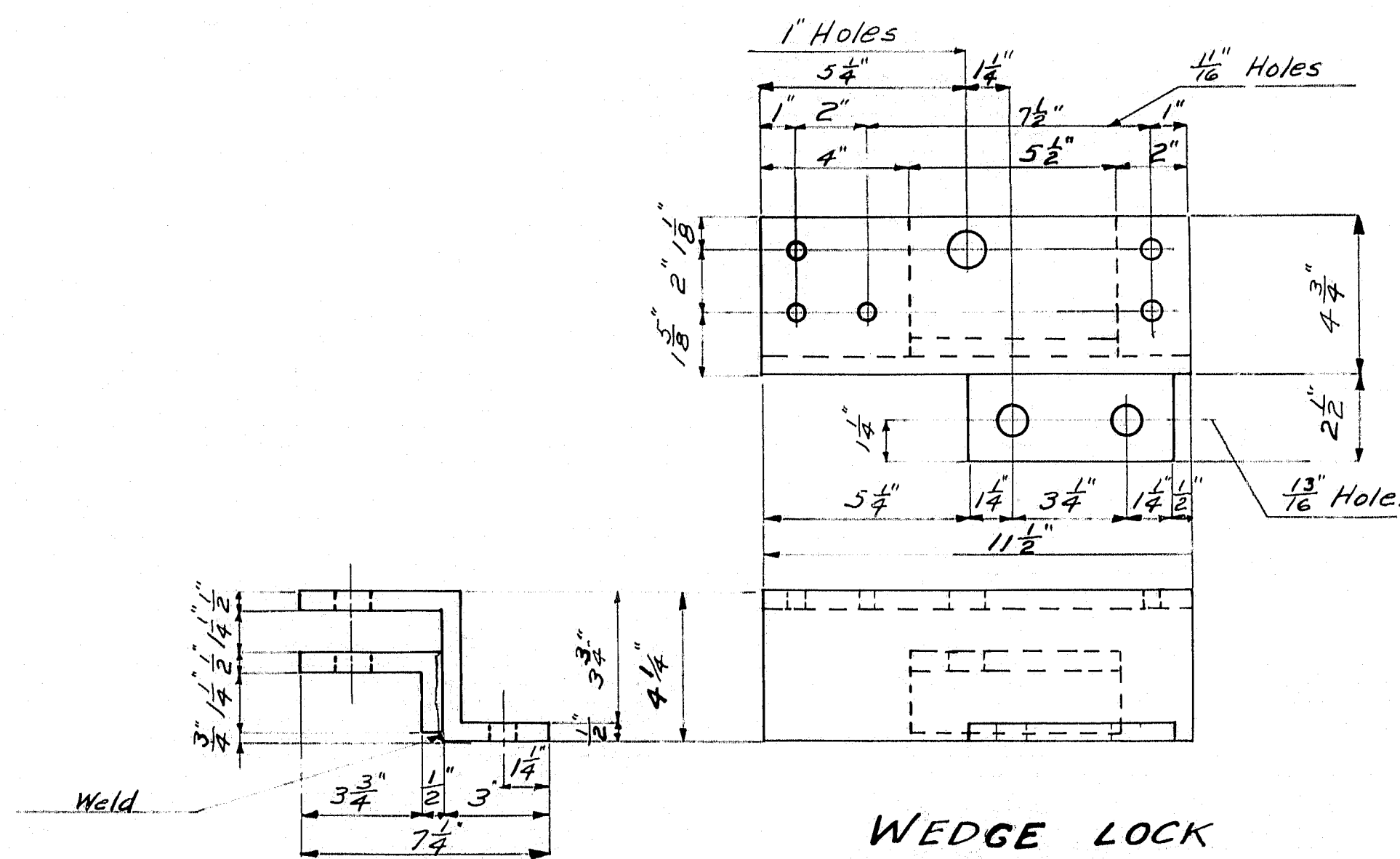
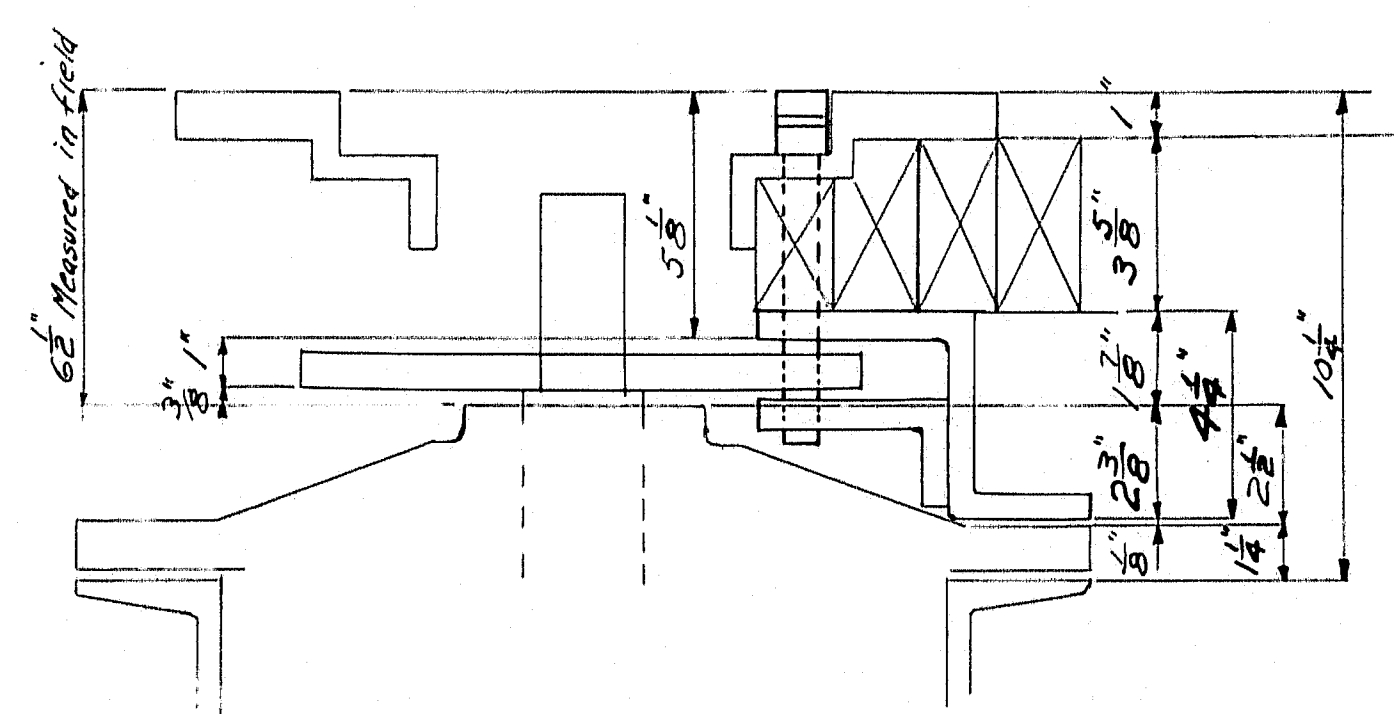
DISC
1 REQ.



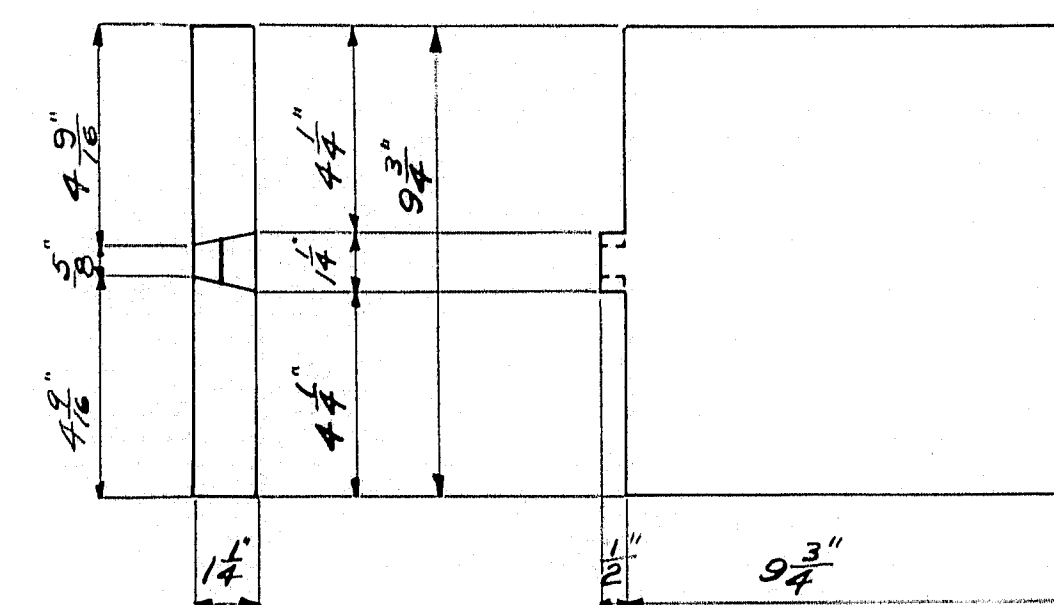
PIN
1 REQ.



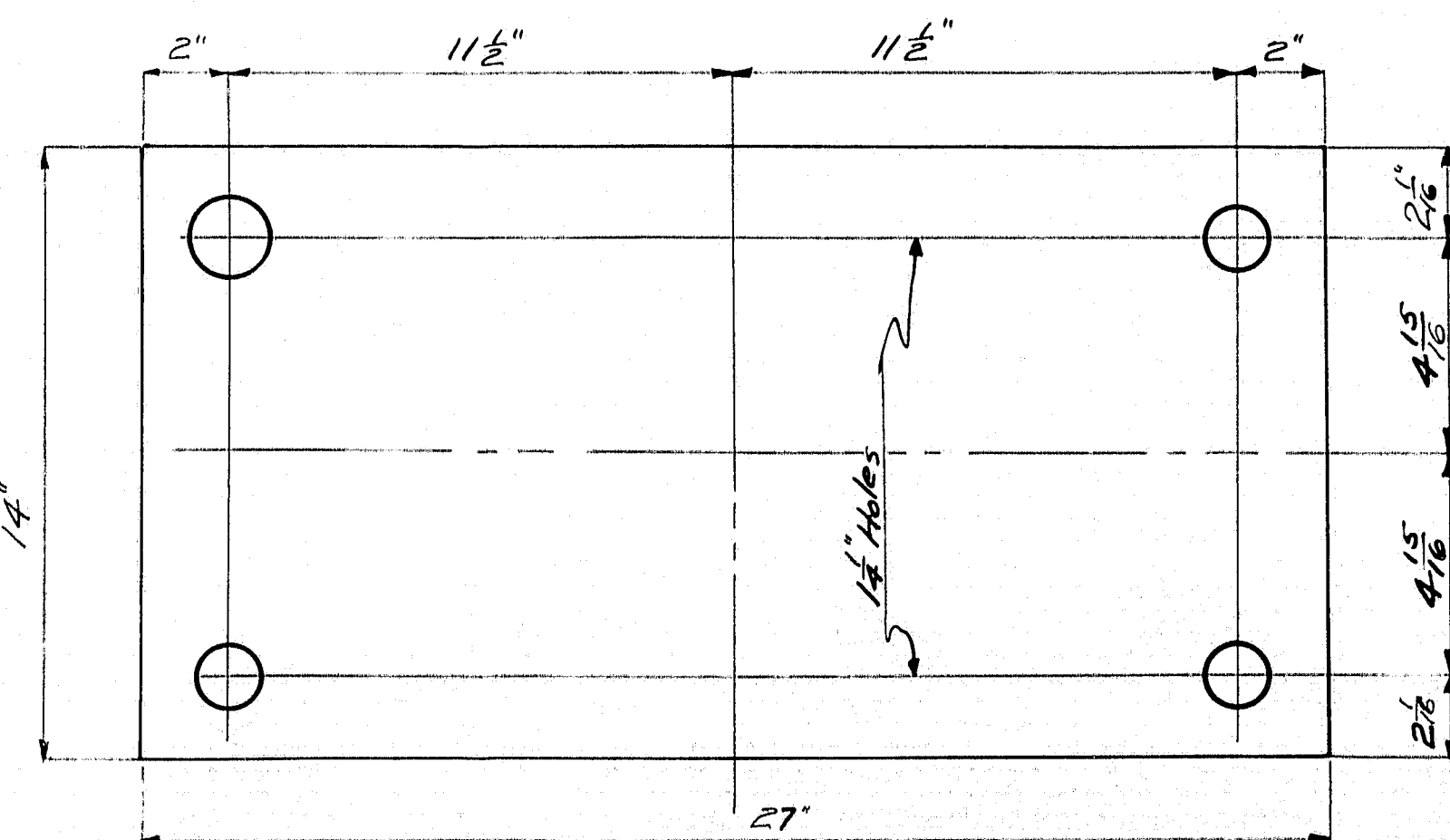
SECTION A-A
WEDGE CAPSTAN SHAFT COVER
1 REQ.



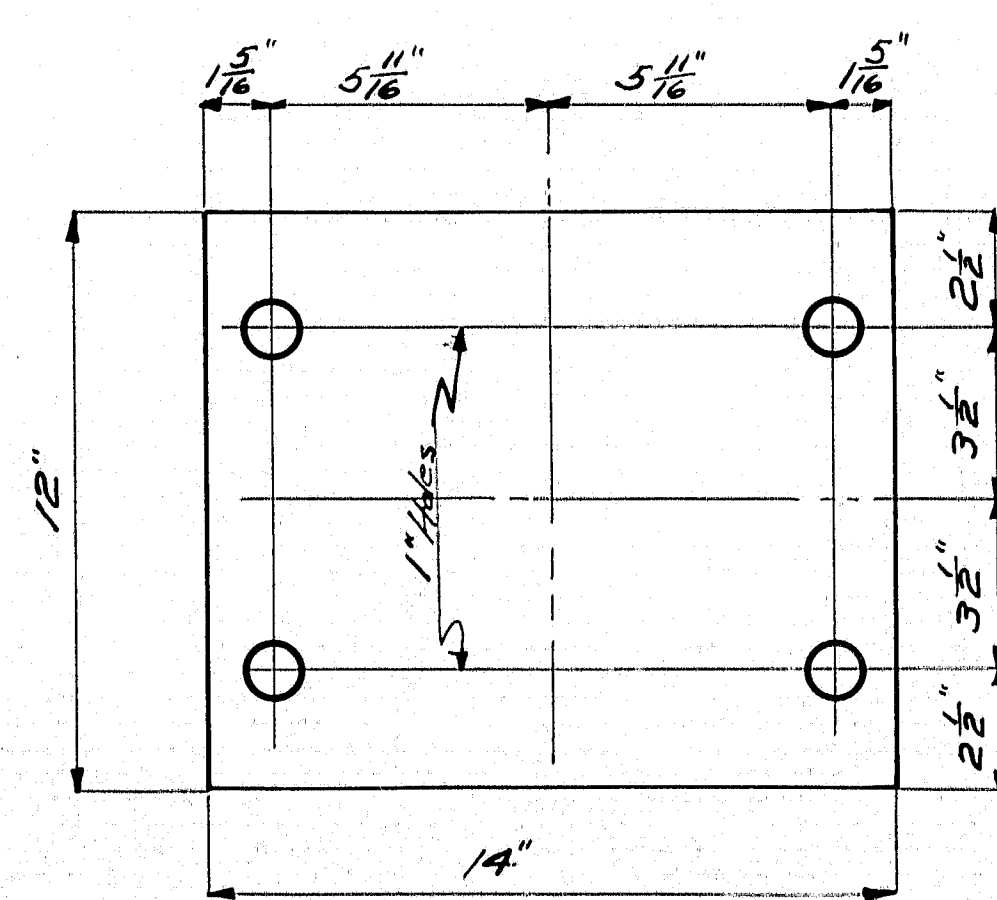
WEDGE LOCK
1 REQ.



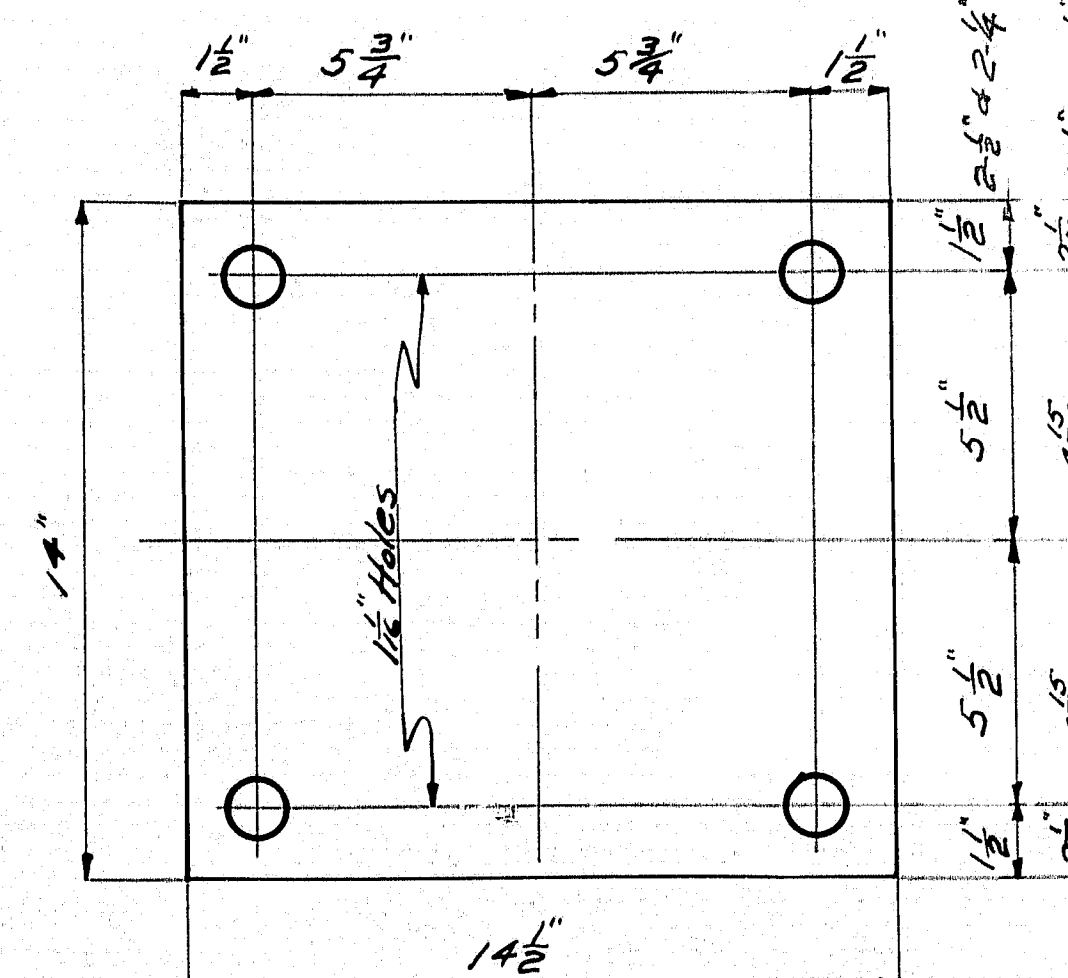
TURNING CAPSTAN SHAFT COVER
1 REQ.



CENTER BEARING SHIMS
REQ. 1-2" 2-1/4"

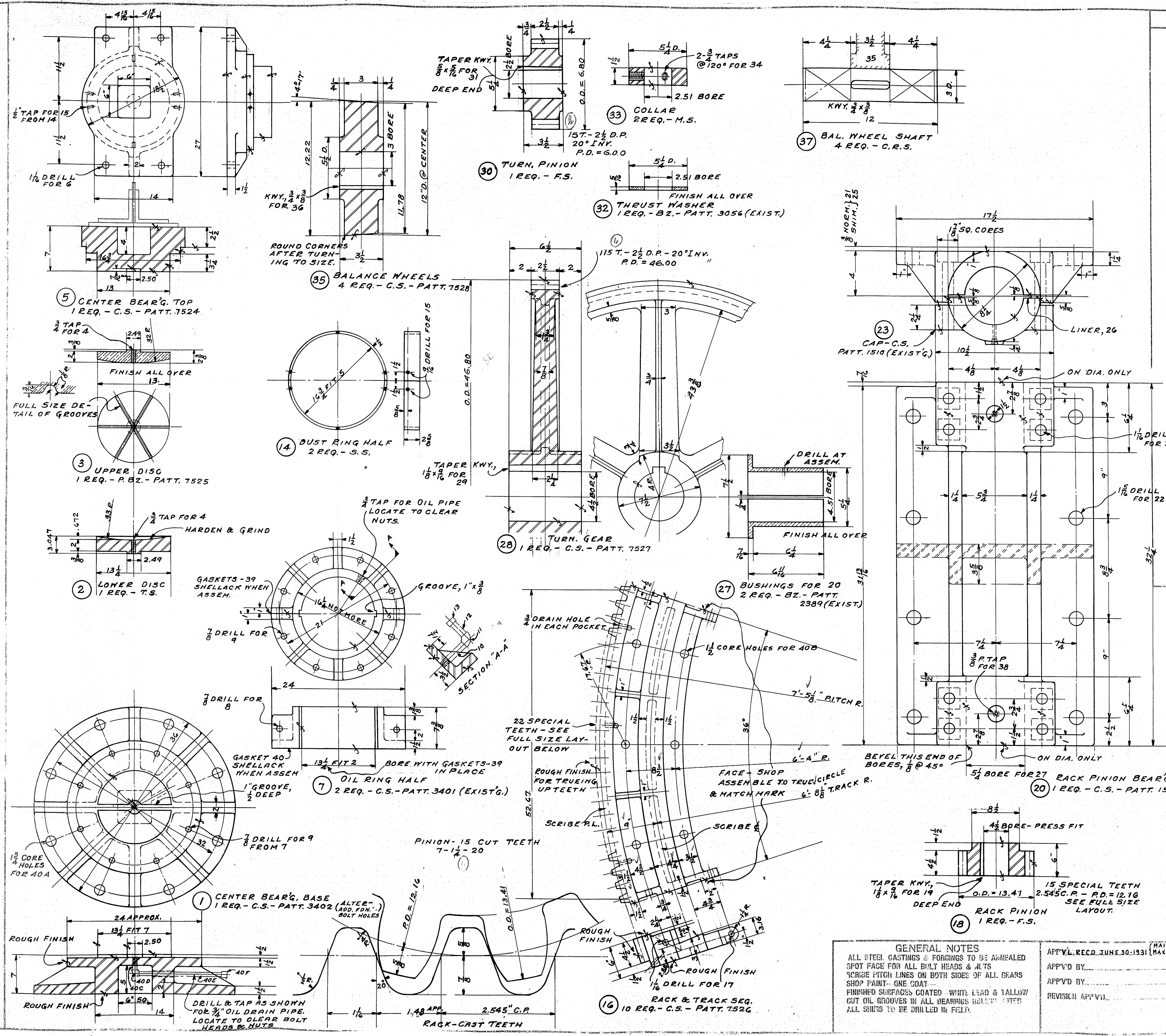


WEDGE GUIDE SHIMS
REQ. 4-1/2"



BALANCE WHEEL BEARING SHIMS
REQ. 4-1/2" 4-1/4"

TOWN 08-02
BRIDGE 2039
STATE HIGHWAY COMMISSION
BRIDGE DIVISION
BARTERS ISLAND BRIDGE
OVER
BACK RIVER
IN THE TOWN OF
BOOTHBAY
LINCOLN COUNTY
DETAILS OF CHANGE IN LOCK
AUGUSTA, ME. MARCH 1935



S.O. 2100		BILL OF MATERIAL		DWG.	
PG.	NAME	Q.	MTL.	PAT.	REMARKS
1	CENTER BEG. BASE	1	C.S.	3402	ALTER-ADD FOR BOLT HOLES
2	LOWER DISC	1	T.S.	-	-
3	UPPER DISC	1	P.B.Z.	7525	-
4	DISC LIFTER	1	S.	-	STD. EYE BOLT
5	CENTER BEAR'G. TOP	1	C.S.	7524	-
6	BOLTS FOR 5	4	S.	-	T.B. LIST
7	OIL RING HALF	2	C.S.	3401	EXIST'G.
8	BOLTS FOR 7	2	S.	-	3/4 X 4 HX. HD. CAP-2 NUTS
9	BOLTS FOR 7	8	S.	-	3/8 X 5 HX. HD. CAP-2 NUTS
10	NIPPLE FOR 7	1	S.	-	3/4 X 6"
11	ELBOW FOR 7	1	M.I.	-	3/4 STD.
12	NIPPLE FOR 7	1	S.	-	3/4 X 4
13	CAP FOR 7	1	M.I.	-	3/4 STD.
14	DUST RING HALF	2	S.S.	-	-
15	BOLTS FOR 14	0	S.	-	1/2 X 1 1/2 HX. HD. TAP-N.M.
16	RACK & TRACK SEG.	10	C.S.	7526	-
17	BOLTS FOR 16	20	S.	-	T.B. LIST
18	RACK PINION	1	F.S.	-	-
19	KEY FOR 18	1	S.	-	KEY LIST
20	RACK PINION BEAR'G.	1	C.S.	1509	ALTER.
21	SHIM FOR 20	1	S.S.	31 1/2 X 1 1/2 X 3/8-7-32	-
22	BOLTS FOR 20	8	S.	-	T.B. LIST
23	CAP FOR 20	2	C.S.	1510	EXIST'G.
24	BOLTS FOR 23	8	S.	-	T.B. LIST
25	SHIM FOR 20	1	B.	-	31 1/2 X 1 1/2 X .375-20
26	LINERS FOR 20	4	BZ.	-	1 1/2 X 6 1/2 X 1/8-1-1-1-4
27	BUSHINGS FOR 20	2	BZ.	2389	EXIST.
28	TURN. GEAR	1	C.S.	7527	-
29	KEY FOR 28	1	S.	-	KEY LIST
30	TURN. PINION	1	F.S.	-	KEY LIST
31	KEY FOR 30	1	S.	-	KEY LIST
32	THRUST WASHER	1	BZ.	3056	EXIST.
33	COLLAR	2	M.S.	-	-
34	SETSCREWS FOR 33	4	S.	-	3/4 X 1 1/2 SQ. HD.-FLT. PT.
35	BALANCE WHEEL	4	C.S.	7528	-
36	KEY FOR 35	4	S.	-	KEY LIST
37	BAL. WHEEL SHAFT	4	C.R.S.	-	-
38	GREASE CUP FOR 20	2	S.	-	3 THD. BOWEN STYLE #213 60Z.-#3
39	GASKETS FOR 7	2	60Z.	5X7 3/8	TEIN TO SUIT 7
40	GASKET FOR 7	1	60Z.	24 D.	WITH 13 1/2 D. HOLE
40A	FOUNDATION BOLTS	8	S.	1 1/2 X 16	12" HAKED-1 NUT & STD. WASH.
40B	FOUNDATION BOLTS	60	S.	1 1/2 X 15 1/2	12" HAKED-1 NUT & STD. WASH.
40C	NIPPLE FOR 1	1	S.	-	3/4 X 2
40D	ELBOW FOR 1	1	M.I.	-	3/4 STD.
40E	PIPE FOR 1	1	S.	-	3/4 X 14 THD. ENDS
40F	CAP FOR 1	1	M.I.	-	3/4 STD.

110 FT. SWING SPAN
 BARTER ISLAND BRIDGE
 BACK RIVER-BOOTHBAY-ME.
 FOR MAINE HIGHWAY COMM.

OPERATING MACHINERY

GENERAL NOTES
 ALL STEEL CASTINGS & FORGINGS TO BE ANNEALED
 SPOT FACE FOR ALL BOLT HEADS & NUTS
 SCRIBE PITCH LINES ON BOTH SIDES OF ALL GEARS
 SHOP PAINT-ONE COAT
 FINISHED SURFACES COATED-WHITE LEAD & TALLOW
 CUT OIL GROOVES IN ALL BEARINGS BELT CUT
 ALL SHIMS TO BE DRILLED IN FIELD

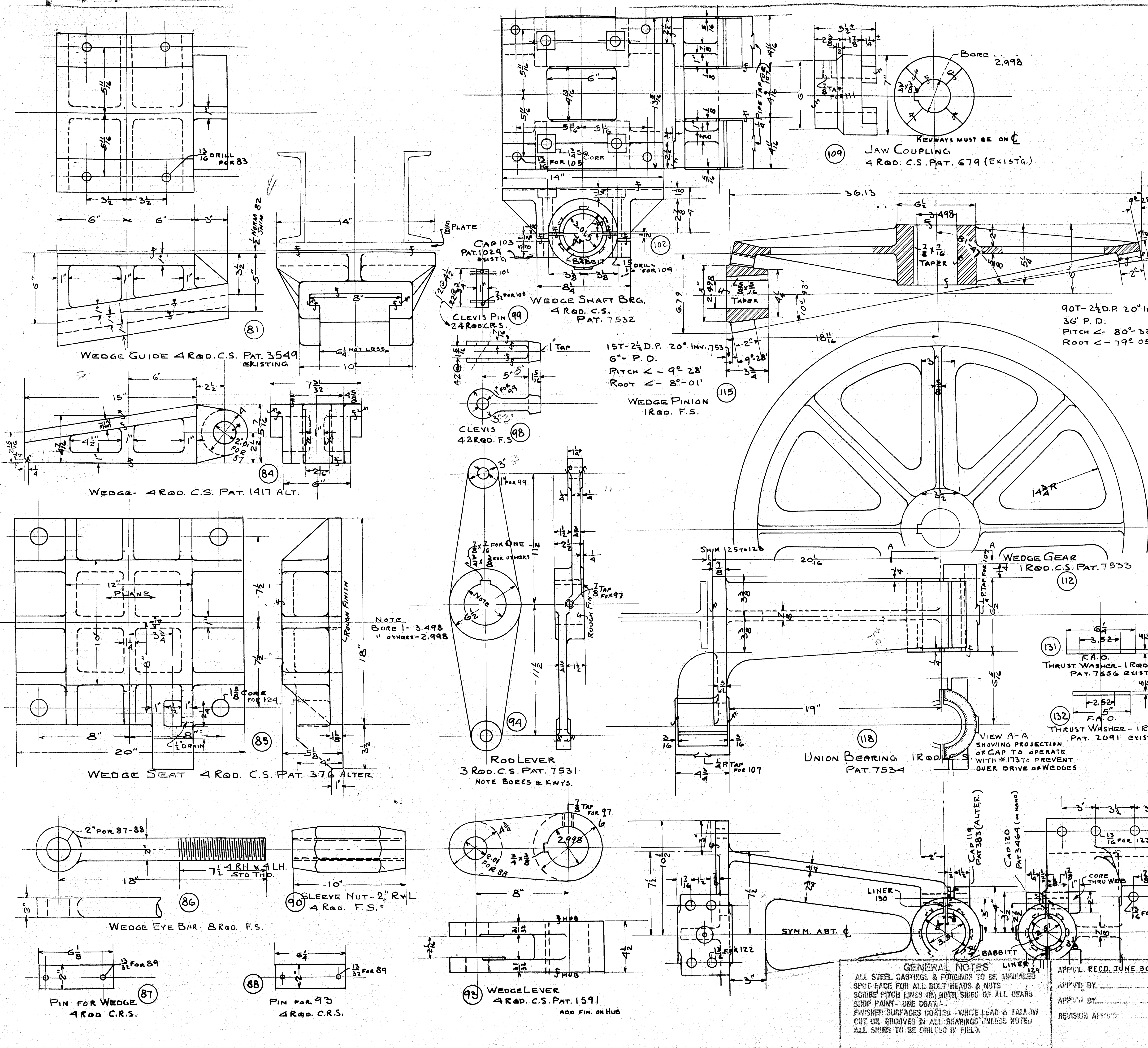
APPROVALS
 APP'D BY: [Signature]
 APP'D BY: [Signature]
 REVISION APP'D: [Signature]

MAINE HWY. COMM.
 APRIL 30, 1931 (MAX. L. WILDER, BR. ENGR.)

THE EARLE GEAR & MACHINE CO.
 PHILADELPHIA, PA.
 DRAWN BY: [Signature]
 CHECKED BY: [Signature]
 REVISION: [Signature]
 DATE: MAY 14, 1931
 DATE: JUNE 5, 1931
 DATE: [Blank]

SHEET 1 OF 5

3231 19-19



S.O. 2100 BILL OF MATERIAL				DWG. 3233E	
PG.	NAME	Q.	MTL.	PAT.	REMARKS
81	WEDGE GUIDE	4	C.S.	3549	EXISTG
82	SHIM FOR 81	5	S.S.	12x14	1/16-1/32
83	BASE BOLT FOR 81	16	S.		TURNOED BOLT LIST
84	WEDGE	4	C.S.	1417	ALT
85	WEDGE SEAT	4	C.S.	376	ALTER
86	WEDGE EYE BAR	8	F.S.		
87	PIN FOR WEDGE	4	C.R.S.		
88	PIN FOR 93	4	C.R.S.		
89	COTTER FOR 87 & 88	16	S.		2 X 3
90	SLEEVE NUT	4	F.S.		
91	NUT FOR 86	4	S		2" STD HEX.
92	NUT FOR 86	4	S.		2" STD HEX. LEFT HAND
93	WEDGE LEVER	4	C.S.	1591	ADD F PAD ON HUB
94	ROD LEVER	3	C.S.	7531	NOTE BORES & KNY.
95	KEY FOR 93	4	S.		KEY LIST
96	KEY FOR 94	3	S.		KEY LIST
97	SET SCREW FOR 94	7	S		3/8 X 1 1/2 SO HD. CUP PT.
98	CLEVIS	42	F.S.		
99	CLEVIS PIN	24	C.R.S.		
100	COTTER FOR 99	48	S.		3/16 X 1 1/2
101	WASHER FOR 99	48	S.		1" STD.
102	WEDGE SHAFT BRG	4	C.S.	7532	
103	CAP FOR 102	8	C.S.	1024	EXISTG
104	CAP BOLT FOR 102	16	S.		T.B. LIST
105	BASE BOLT FOR 102	16	S.		T.B. LIST
106	LINER FOR 102	16	BZ.	1 1/2 X 4 1/2	1/16-1/32-3/64
107	GREASE CUP	10	S.		BOWMAN-STYLE 2 1/2 1 1/2" O.D. NO. 1 - 4 THD.
108					
109	JAW COUPLING	4	C.S.	679	EXISTG.
110	KEY FOR 109	4	S.		KEY LIST
111	SET SCREW FOR 109	4	S.		3/8 X 1 1/2 SO HD. CUP PT.
112	WEDGE GEAR	1	C.S.	7533	
113	KEY FOR 112	1	S.		KEY LIST
114					
115	WEDGE PINION	1	F.S.		
116	KEY FOR 115	1	S.		KEY LIST
117					
118	UNION BRG	1	C.S.	7534	
119	CAP FOR 118	1	C.S.	383	ALTER.
120	CAP FOR 118	1	C.S.	3464	C3TG IN STOCK
121	CAP BOLT FOR 118	4	S.		T.B. LIST
122	CAP BOLT FOR 118	4	S.		T.B. LIST
123	BASE BOLT FOR 118	8	S.		T.B. LIST
124	ANCHOR BOLT FOR 85	16	S	1 1/2 X 14	3" THD - 1" NUT X 1" STD WASHER
125	SHIM FOR 118	1	S.S.	2 1/2 X 6 1/2	1/8-1/16-1/32
126	SHIM FOR 118	2	S.S.	6 1/2 X 3 1/2	1/8-1/16-1/32
127	SHIM FOR 118	1	B.	2 1/2 X 6 1/2	3 Pcs. .01 THICK
128	SHIM FOR 118	2	B.	6 1/2 X 3 1/2	3 Pcs. .01 THICK
129	LINER FOR 118	2	BZ.	1 1/2 X 4 1/2	1/16-1/32-3/64
130	LINER FOR 118	2	BZ.	1 1/2 X 6 1/2	1/16-1/32-3/64
131	THRUST WASHR FOR 112	1	BZ.	7656	EXISTG
132	THRUST WASHR FOR 115	1	BZ.	2091	EXISTG

110FT. SWING SPAN
 BARTER ISLAND BRIDGE
 BACK RIVER-BOOTHBAY-ME.
 FOR MAINE HIGHWAY COMM.

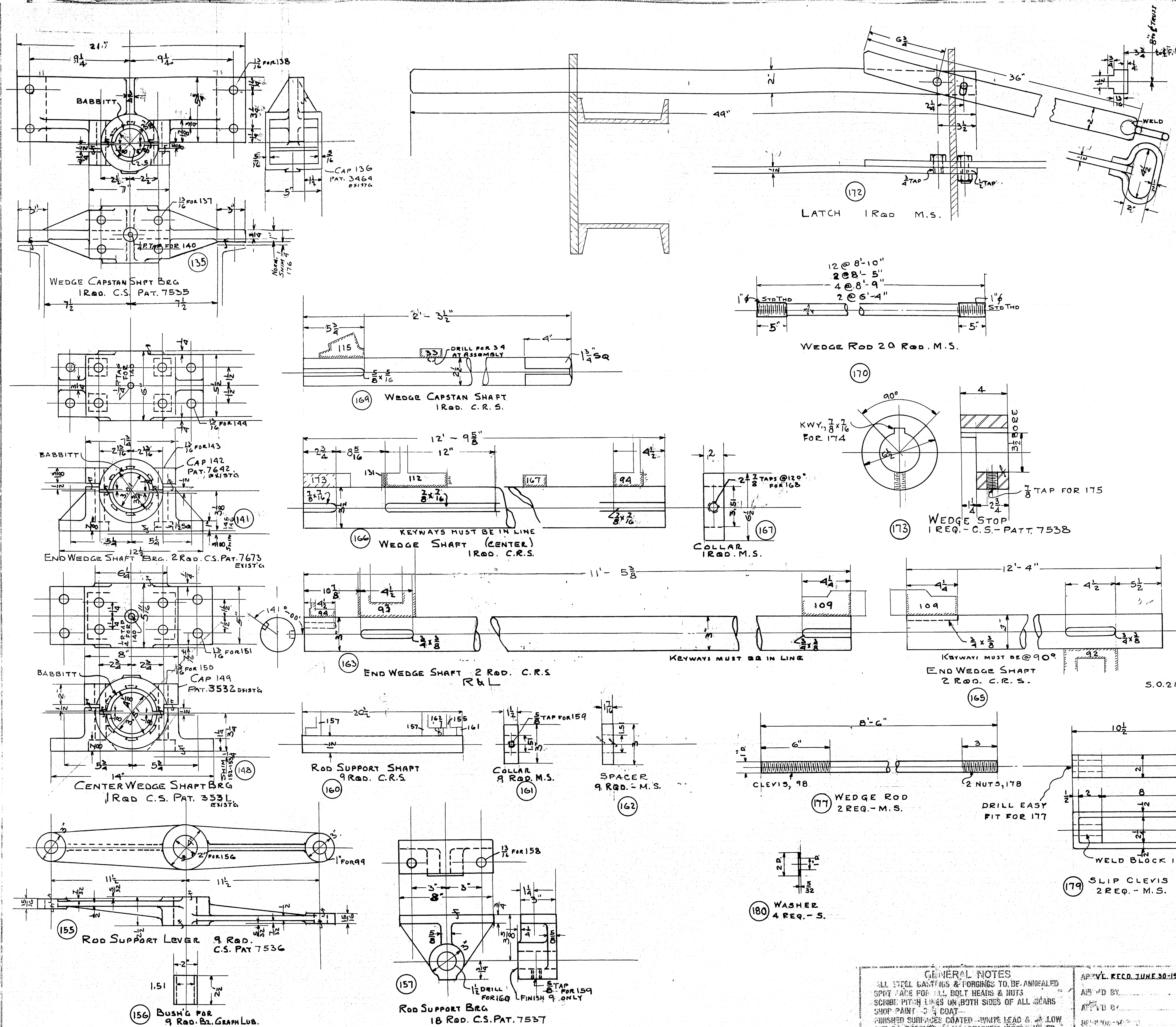
OPERATING MACHINERY

GENERAL NOTES
 ALL STEEL CASTINGS & FORGINGS TO BE ANNEALED
 SPOT FACE FOR ALL BOLT HEADS & NUTS
 SCRIBE PITCH LINES ON BOTH SIDES OF ALL GEARS
 SHOP PAINT- ONE COAT
 FINISHED SURFACES COATED- WHITE LEAD & TALL-OIL
 CUT OIL GROOVES IN ALL BEARINGS UNLESS NOTED
 ALL SHIMS TO BE DRILLED IN FIELD.

APPROV. REC'D. JUNE 30-1931
 APP'VD BY: [Signature]
 APP'VD BY: [Signature]
 REVISION APP'VD

MAINE HWY. COMM.
 MAX L. WILDER- BR. ENGR.
 THE EARLE GEAR & MACHINE CO.
 PINEAPPLE, PA.
 DATE: MAY-14-1931
 DATE: JUNE 2-1931

3233-130



S.O. 2100 BILL OF MATERIAL				DWG 3234	
FC.	NAME	Q.	INTL.	PAT.	REMARKS
135	WEDGE CAP SHFT BRG.	1	C.S.	7535	
136	CAP FOR 135	1	C.S.	3464	EXIST'G
137	CAP BOLT FOR 135	4	S.		TURNED BOLT LIST
138	BASE BOLT FOR 135	4	S.		T.B. LIST
139	LINER FOR 135	2	BZ.	14x5 1/2	1/16-1/16-3/32-1/8
140	GREASE CUP	6	S.		BOWEN STYLE 213 1202. 3 THD.
141	END WEDGE SHFT BRG	2	C.S.	7673	EXIST'G
142	CAP FOR 141	2	C.S.	7642	EXIST'G
143	CAP BOLT FOR 141	8	S.		T.B. LIST
144	BASE BOLT FOR 141	8	S.		T.B. LIST
145	SHIM FOR 141	2	S.S.	12x5 1/2	1/8-1/8-1/16-1/32
146	SHIM FOR 141	2	B	12x5 1/2	3 PCS. .01 THICK
147	LINER FOR 141	4	BZ.	1 1/2x9x 1/16-1/16-3/32-1/8	
148	CENTER WEDGE SHFT BRG	1	C.S.	3531	EXIST'G
149	CAP FOR 148	1	C.S.	3532	EXIST'G
150	CAP BOLT FOR 148	4	S.		T.B. LIST
151	BASE BOLT FOR 148	4	S.		T.B. LIST
152	SHIM FOR 148	1	S.S.	14x5 1/2	1/8-1/8-1/16-1/32
153	SHIM FOR 148	1	B	14x5 1/2	3 PCS. .01 THICK
154	LINER FOR 148	2	BZ.	12x5 1/2	1/16-1/16-1/8-1/8
155	ROD SUPPORT LEVER	9	C.S.	7536	
156	BUSHING FOR 155	9	BZ.	GRAPH LUB.	
157	ROD SUPPORT BRG.	18	C.S.	7537	
158	BASE BOLT FOR 157	36	S.		3/8x1 1/4 HX HD MCH
159	SET SCREW FOR 157	27	S.		1/8x1 1/4 1 INUT. L.W.V.B.W. 50 HD CUP PT.
160	ROD SUPPORT SHAFT	1	C.R.S.		
161	COLLAR FOR 160	9	M.S.		
162	SPACER FOR 160	9	M.S.		
163	END WEDGE SHAFT	2	C.R.S.		
164					
165	END WEDGE SHAFT	2	C.R.S.		
166	WEDGE SHAFT (CENTER)	1	C.R.S.		
167	COLLAR FOR 166	1	M.S.		
168	SET SCREW FOR 167	2	S.		3/8x1 1/4 30 HD. CUP PT.
169	WEDGE CAPSTAN SHFT	1	C.R.S.		
170	WEDGE ROD	20	M.S.		
171	NUT FOR 170	44	S.		1" STD.
172	LATCH (COMPLETE)	1	M.S.		
173	WEDGE STOP	1	C.S.	7538	
174	KEY FOR 173	1	S.		KEY LIST
175	SET SCREW FOR 173	1	S.		7/8x1 1/4 50 HD. CUP PT.
176	SHIM FOR 135	2	S.S.	5 1/2x3	1/8-1/8-1/16-1/32
177	WEDGE ROD	2	M.S.		
178	NUTS FOR 177	2	S.		1" STD. HEX
179	SLIP CLEVIS	2	M.S.		
180	WASHER	4	S.		

110FT. SWING SPAN
BARTER ISLAND BRIDGE
BACK RIVER-BOOTHBAY-ME.
FOR MAINE HIGHWAY COMM.

OPERATING MACHINERY

THE EARLE BOOK COMPANY, INC.

BRANCH R. P. MAY 19-1931
HINT June 4-1931

500 4 5

~~3234~~ 19-19

GENERAL NOTES

ALL SPOT CANTHS & FORINGS TO BE ANNEALED

SPOT FACE FOR ALL BOLT HEADS & NUTS

SCRIBE PITCH LINES ON BOTH SIDES OF ALL GEARS

SHOP PAINT 3 COAT

FINISHED SURFACES COATED WHITE LEAD & 1/2 LBS

CUT OFF PROOGEV IN ALL BEARINGS UNLESS NOTED

NOTES TO BE DROPPED IN FIELD

(MAINE HWY. COMM.
REC'D JUNE 30-1931) MAY 1 - WILDER BR ENGR

AM 11 E

1000

APR 19 1964

[illegible]

... ..

